

Our Services Include:

- Free use of computers, including internet
- Free email—sending & receipt
- Free Book Exchange
- Free scanning of documents
- Low Cost Photocopying
- Low Cost Laminating
- Low Cost Faxing
- Community Pantry
- Rooms for Hire Groups, Meetings & Events
- Community Bus (12 seats) for Hire

WE NEED YOU!

Volunteering is fun!
We have roles for
volunteers that are
flexible and rewarding!
Call us today!

**Book and Pay
Online**

www.wchi.com.au



Whittlesea Community House

Program Guide

July—December

2023

www.wchi.com.au

Whittlesea Community House is also proud to auspice and support:

Whittlesea Community Garden—contact Megan on 9716 3361

Boomerang Bags—plasticfreewhittlesea@gmail.com

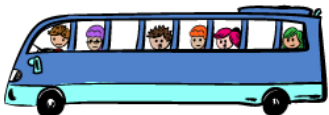
WhittleCukes

Opening Hours

Monday—Thursday

10.00am—3.00pm

Use our bus!



Whittlesea Community House has a 12 seat bus
that you can hire!

Talk to us about moving your crew to their next
event

ONLY \$100 per day for Community Groups!

Call 9716 3361

*Changing the pattern of your life through
learning and community connection*

92a Church Street Whittlesea

Phone: 03 9716 3361 wchi@whittleseach.com.au

www.wchi.com.au

ABN: 82 167 376 746



[www.facebook.com/
whittleseacommunityhouse](http://www.facebook.com/whittleseacommunityhouse)



**City of
Whittlesea**





Fix it Friday

Get out of trouble, speak to an expert and sleep better at night

A one stop shop for solving problems

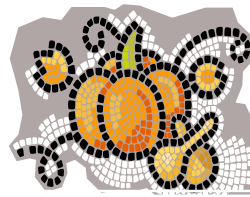
Whittlesea Community Connections Social Worker,
Whittlesea Community Legal Service, Police - Stat Decs and crime reporting
Lift program for Mental Health, Centrelink, Gamblers Help
Financial Counselling, My Aged Care (DPV Health, MP Lauren Kathage
NDIS with Brotherhood of St Laurence, No Interest Loan Scheme,
Home and Community Care for young people (HACCPYP)

10am–1.00pm

Fridays:

28th July, 25th Aug, 22nd Sep, 27th Oct, 24th Nov, 15th Dec

For assistance please register on 9716 3361



Whittlesea Community Garden

Share and develop a love of gardening. Learn new things through regular workshops, rent a garden bed, grow veggies, meet other gardeners, make new friends and catch up with old ones!

Supported session times each week

MONDAYS 8.30am–11.30am **FREE**
THURSDAYS 8.30am–12.30pm **FREE**

For bookings and all things gardening call Megan on 9716 3361 communitygarden@whittleseach.com.au

Starry Starry Night



Beginners Star Gazing Workshop Series

TUESDAYS

15th, 22nd & 29th August and 5th September

Join local expert Steve Fleming for this beginners guide to the stars!

All ages welcome, dress warmly!

7.00pm–8.30pm

Whittlesea Community Activity Centre, Laurel Street

Scan the code below to book or call 9716 3361



Supported by:



City of Whittlesea



BOOK NOW FOR FREE ACTIVITIES IN SEMESTER 2

Thursday 20th July 10.30am–12.30pm

DIY Terrariums

To celebrate “Plastic Free July” and with support from the City of Whittlesea

Thursday 17th August 10.30am–12.30pm

Weaving Coil Baskets with Gaye Chatfield

Thursday 14th September 10.00am–12 Noon

R U OK Day Morning Tea at the Garden

Thursday 5th October 10.30am–12.30pm

DIY Stepping Stone

Thursday 16th November 10.30am–12.30pm

Recycling Week Garden Workshop

TO BOOK CALL 9716 3361

Volunteers Wanted!

There are lots of ways to make a difference in your community.
Join our Volunteer team today and helps us with:

Administration and events, driving our community bus, assisting with community meals, helping community members with technology, facilitating groups -the possibilities are endless!

We are an approved volunteer work organisation with Centrelink



Boomerang Bags
Sewing Sessions
Thursdays
10.30am–3.00pm
Whittlesea Community
Activity Centre
Laurel Street
Everyone Welcome
No sewing experience
necessary

Op Shop Tours

We are planning a series of Op Shop Tours in Semester 2. If you would like to be kept informed of dates and routes you can register with us by calling 9716 3361



Whittlesea Community House acknowledges the support of the
Department of Families, Fairness and Housing (DFFH)

Get Active



Water Aerobics

Fridays each week
Hidden Valley Resort–Wallan
11.00am–12 Noon
\$13.50 per class
Need a lift?

We have limited seats available on our community Bus. Be at the House at 10.15am each week and pay \$5.00

Bookings Essential



Pilates for 55+

Wednesdays from 12th July
Whittlesea Scout Hall
40 Fir Street
10.00am–11.00am
\$15.00 per class
For more information
call Rickie 0409 953 950

High Tea Fundraiser



Tuesday 10th October
Whittlesea Bowls Club
12 Noon–2.00pm
Tickets \$35 per head
Call 9716 3361



Join us for our AGM
Applications for membership of the House or COMMITTEE OF MANAGEMENT nomination forms can be found on our website www.wchi.com.au

**THURSDAY 19TH OCTOBER at
11.00AM**

Life Long Learning

First Aid Training

All courses are delivered on behalf of Allens Training Pty Ltd RTO 90909 by EHS Solutions

CPR \$80 HLTAID011 \$150 HLTAID012 \$195

Saturdays 19th August, 7th October & 2nd December

All courses offered in blended format with pre-course online learning plus face to face practical demonstration

Boat Licence (Includes PWC)

Saturdays

15th July, 12th August, 16th & 30th September, 4th & 25th November and 9th December

9.00am–1.00pm

\$140 per person

Students from 12 years are eligible—Please note that PWC endorsement will only apply to students over 16 years.



Whitecard—Friday 11th August

Traffic Management—Friday 18th August

Traffic Control—Friday 1st September

Are you looking for a new career in an industry that is booming?

Great for students looking to start their working life or for those

who are looking to make a change! These courses are also recommended for community groups who manage events. **Big changes are coming for these courses which will see them significantly increase in price, take longer to complete and require minimum on the job hours.**

Courses run from 8.00am—3.00pm

Whitecard \$149 per person minimum age 14

Traffic Management \$200 per person minimum age 16

Traffic Control \$200 per person minimum age 16

ALL 3 COURSES FOR ONLY \$500

Call Simone to book 0499871844



RTO 21386

Life Long Learning

Beginners Welding

Wednesdays for 7 weeks from 4th October (July class FULL)

6.00pm–9.00pm

\$130 per person

Central Trades Training Centre

Safety Gear Provided



Metal Detecting

Saturday 18th November

1.00pm–4.30pm

\$10 per person

Join us for this introductory session on metal detecting where we will cover the different types of detectors and their uses, maps, internet resources and basics on where to hunt as well as basic mining theory and geology!

Bring your own detector if you have one

Digital Essentials 1

Start with the basics - as long as you have a smartphone or tablet we can change your life!

Tuesdays for 10 weeks from 11th July

10.00am–12.30pm

\$20/ concession FREE

Digital Essentials 2

Once you have the basics up your sleeve you can move onto new challenges and really digitise your world!

Tuesdays for 10 weeks from 5th October

10.00am–12.30pm

\$20/concession FREE



Whittlesea Community House acknowledges the support of the
Department of Families, Fairness and Housing (DFFH)

Life Long Learning



Whittlesea Community House

"Changing the pattern of your life through learning and community connection"

CATERING FOR COMMUNITY



FREE

How are your skills in the kitchen?
LEARN TO COOK FOR A CROWD

Develop your catering skills and serve your community at the same time. Join us and learn all the tricks of the trade whilst preparing and delivering meals for our What's Cooking Thursday Women's Lunch series. This course is FREE and offers the opportunity to gain valuable experience for work or future study

Thursdays in 2023: 13th & 27th July, 10th & 24th August,
14th September, 12th & 26th October,
9th & 23rd November and 14th December
9.00am—1.00pm

Call 9716 3361 to register or for more information

Phone 9716 3361 • www.wchi.com.au • 92a Church Street, Whittlesea, Victoria, 3757

Ukulele FOR FUN

MONDAYS 10.00AM—11.00AM

If you have played a Uke before (even if it was a while ago) or you are regularly strumming for pleasure this group is for YOU!

\$50/\$40 concession per Term

Ukulele for Beginners



MONDAYS

11.15am—12.15pm

Dust off that Ukulele or steal one from the kids and join in the fun!


\$50/\$40 per Term

DON'T FEAR THE UKULELE



UPDATE YOUR MICROSOFT SKILLS SO YOU CAN...

Be the Office Pro



Learn tips & tricks for the latest versions of Word, Excel & Outlook

Tuesdays 12:30pm - 2:30pm from 10th October (8 classes)
Whittlesea Community House, 92A Church St Whittlesea

Are you applying for jobs that need experience with the latest version of Microsoft Office? Are you an experienced Office user but your skills are out of date?

Join our free course to learn the latest in Work, Excel and Outlook. You'll also be guided through formatting an up-to-date resume.

Women, trans women and non-binary folk of all cultures welcome.

FOR MORE INFORMATION AND TO REGISTER
contact Karen on 9716 3361 or karenmawhittleseach.com.au

Join a group

Crafternoons

Mondays 1.00pm—3.00pm

Join our enthusiastic craft group as we learn new things, share our craft skills and get together for a few laughs

\$8.00 per session or \$50/40 concession per Term

Game On!

Tuesdays 6.00pm-9.00pm

Join this friendly group of gamers that meets weekly. (recommended for age 15-25)

\$2.00 per person + Dinner money
Adult Supervised

Whittlesea Township Choir

Mondays 1.00pm—3.00pm

Come and create wonderful music, learn harmonies, have fun and perform for the community

\$50 per semester

Family Games Night

Selected Fridays please call for dates

6.00pm—9.00pm

Join us for retro board game fun on a Friday night!

\$2.00 per person or \$5.00 per family

Whittle C Ukes

Mondays each week 9.30am—11.00am

Tuesdays each week 1.00pm—3.00pm

Whittlesea Bowls Club

Join our local Ukulele group and play at events!

Community Services

Whittlesea Community House
92A Church Street, Whittlesea

BIG BLOKES BRUNCH



**BRING A MATE
THE FOOD IS
GREAT**

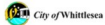
Tuesdays 11.30am

Whittlesea Community Activity Centre
Laurel Street, Whittlesea

Proudly brought to you by Whittlesea Community House in partnership with the Department of Justice



Whittlesea Community House Inc.
ABN: 82 167 376 746



LADIES LUNCH



The "Ladies who Lunch" are back for 2023

Bring a friend!

Thursday

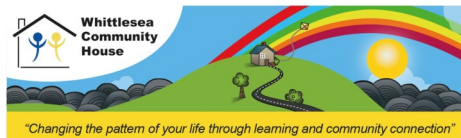
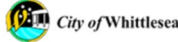
13th & 27th July, 10th & 24th August,
14th September, 12th & 26th October,
9th & 23rd November and 14th December

11.30am – 1.30pm

Gold Coin Donation Appreciated

*Vegetarian and GF Options available. Please RSVP on 9716 3361

Whittlesea Community Activity Centre



Free Tax Help 2023



Fridays

10.00am – 12.00pm

July 14th & 28th, August 11th & 25th and September 8th & 22nd

ONLINE APPOINTMENTS ALSO AVAILABLE

To reserve your appointment call 9716 3361 or email
wchi@whittleseach.com.au

This free assistance is provided to people on low incomes with no trust, investments or ABNs. Participants require a MyGov account linked to the ATO—assistance with this is also available

Phone 9716 3361 • www.wchi.com.au • 92a Church Street, Whittlesea, Victoria, 3757

**POWER
SAVING
BONUS**
is back!



GET ANOTHER
\$250

NEXT ROUND OF
THE PSB STARTS
24 MARCH 2023



9716 3361



Q www.nhvc.org.au/power-saving-bonus-outreach-program



Soup and Games
Wednesdays from July 19th
11.30am – 1.30pm

Come and snuggle up with us at the House!

The heater is on, the soup is bubbling and we have heaps of board games!

Everyone is welcome

Gold coin donation appreciated

Community Services

Did you know that you can get the low down on **EVERYTHING** happening at the House each week by joining

Text out Tuesday

Speak to us about registering TODAY

TEXTILE TUESDAYS

Don't throw away those clothes you don't wear! Turn them into completely new outfits!

Learn to sew, improve your skills or just come along and see what the fuss is about!

2ND TUESDAY EACH MONTH

Whittlesea Community Activity Centre—Laurel Street
1.00pm—3.00pm
Starts 11th July

FREE

Wills and Wishes Clinic

Wills, Powers of Attorney & Guardianship

Is writing a will on your "to do" list?

Call 9716 3361 to register your interest

Appointments on Fridays between 10am—5.00pm

These sessions are provided in conjunction with Latrobe University Law School and Whittlesea Community Legal Service

****You must be over 18 to participate and we cannot assist with trusts or complex matters**

Community Food Relief Program

- **Pantry packs are available during office hours**
- **Visit our community pantry outside office hours for a variety of non perishable food items.**
- **Dry dog and cat food is also available from the House during office hours**

Thank you to Whittlesea IGA and the generous locals who donate to our program. Thanks also to SCAR & ARC for our pet food donations